



## DotScan Braille Inspection System << Braille Books >>



Innovative quality assurance system for inspecting  
embossed Braille on Braille books

in-situ - Future by innovations!

in-situ

vision & sensor systems

# DotScan

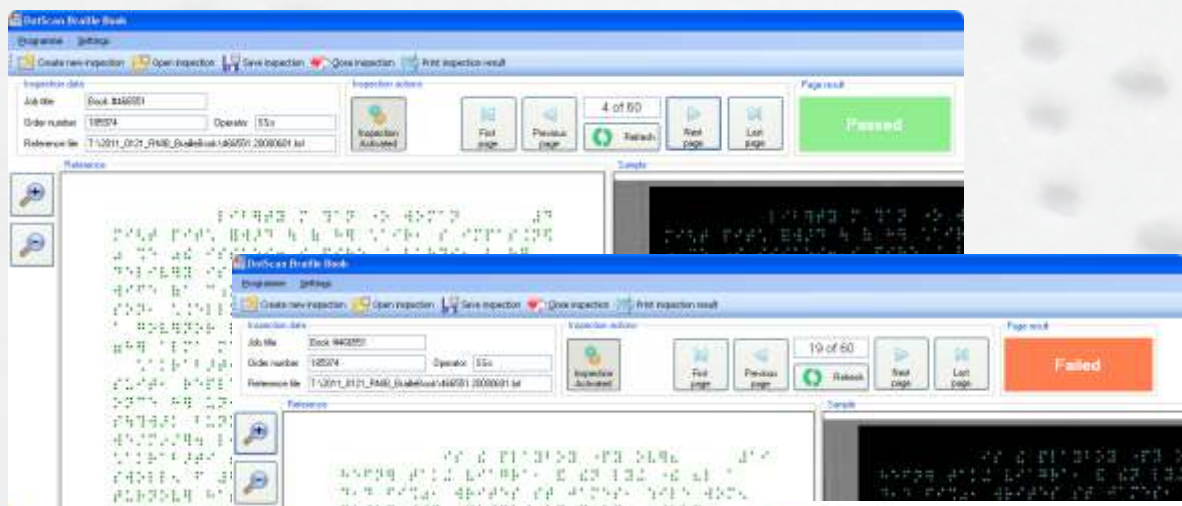
## Innovative technology that inspires!

With DotScan for Braille Books in-situ provides another highly developed 3D inspection system to ensure the quality of embossed Braille text in production environments. Due to in-situ's award-winning 3D SFS technology, all Braille dots on a page with a maximum size of 350 x 290 mm<sup>2</sup> can be read and compared in **just 2 seconds!** The system can compare against any electronic Braille ASCII file. Dot errors (omissions and/or additions) are recognized and highlighted.

DotScan for Braille Books helps you recognize embosser malfunctions in early production quickly with the minimum of effort. It ensures the best possible quality of your Braille products.

### Technical Specifications

<b>Inspection area:</b>	<b>350 x 290 mm<sup>2</sup></b>
<b>Inspection time:</b>	<b>2 seconds per page</b>
<b>System size:</b>	<b>860 x 600 x 1050 mm<sup>3</sup></b>
<b>Display:</b>	<b>21" TFT</b>



#### DotScan-Report

Order No.:	185974
Operator:	SSo
Date/Time:	9/16/2011 - 5:56:45 PM
Reference PDF:	T:\2011_0121_RNIB_BrailleBook\466551_20000601.brf
Pages:	60
Pages checked:	19 (32%)
Pages OK:	2 - 18
Pages NOK:	1, 19
Pages not checked:	20 - 60
Dots checked:	41801
Dots NOK:	9 (0%)
Result:	Check failed.
	17 pages match with reference.
	2 pages differ from the reference with 9 dot errors in total.
	41 pages not checked.



## What you get with a DotScan system

- > Recognition and comparison of embossed Braille against electronic master files.
- > Large scanning area for Braille pages up to 350 x 290 mm<sup>2</sup>.
- > Conversion of unknown Braille text into Braille ASCII files.
- > Robust and reliable Braille character recognition algorithm compensates bows and irregularities in embossing.
- > Reliable scanning of old and worn-out Braille documents due to in-situ's 3D SFS scanning technology.
- > Ability to inspect and document results of whole Braille books.
- > Easy-to-use software interface.
- > Inspection assistant that guides you through the whole inspection process.
- > Saving and printing of inspection results for QA-purposes.
- > Editable printing templates to fulfil customer requirements and special requests.
- > Detailed hard- and software documentation.

## Your benefits

- > Documented quality assurance for embossed Braille products.
- > Early recognition of embosser malfunctions during production.
- > Saves time and costs during inspection process.
- > Will help you to get the best possible customer feedback!





## Who is in-situ?

in-situ's headquarters are situated close to Munich in Germany. Due to a strong collaboration with universities and research institutes, several innovative products have been developed since 2001, including DotScan, a worldwide renowned Braille inspection system for the packaging and pharmaceutical industry.

in-situ is constantly growing and is always looking for new challenges in vision applications.

## Contact

**in-situ** GmbH

Mühlweg 2c  
82054 Sauerlach  
Germany

phone: +49 (0)8104 90960 0

fax: +49 (0)8104 90960 29

e-mail: [dotscan@in-situ.de](mailto:dotscan@in-situ.de)

web: [www.dotscan.de](http://www.dotscan.de)

**in-situ** - Your Vision Provider

