



DotScan Braille Inspection System



Innovative quality assurance system to inspect Braille printing on folding boxes and embossing dies

in-situ - Future by innovations!

www.in-situ.de
www.dotscan.de

in-situ
vision & sensor systems

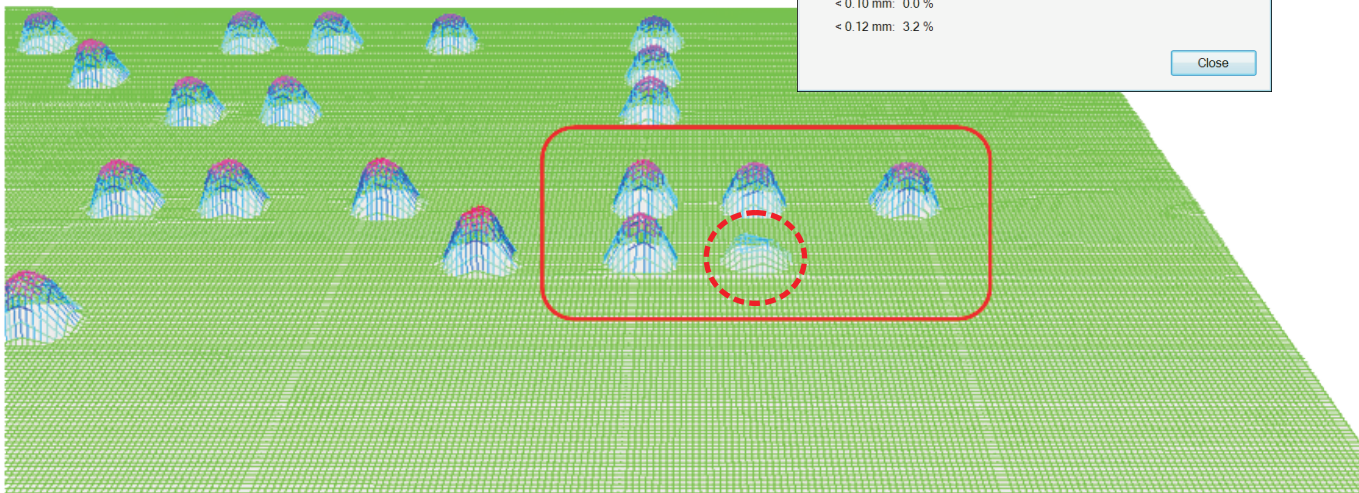
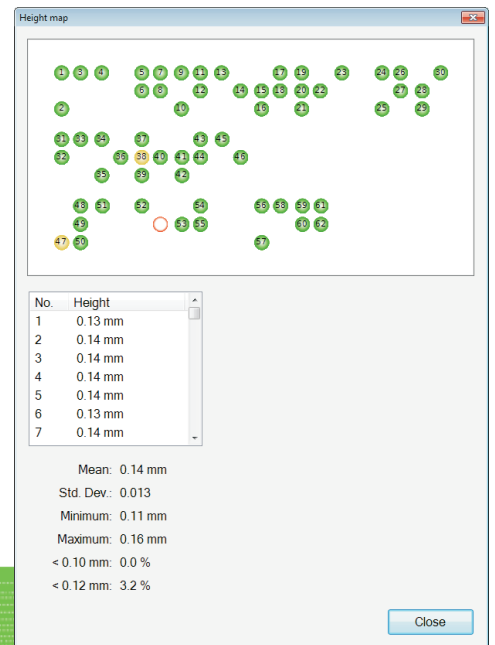
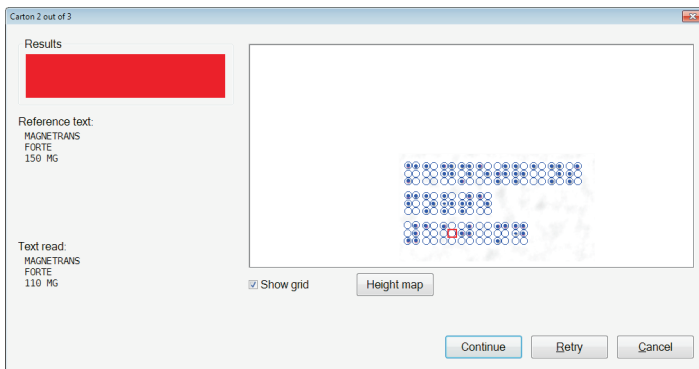


Innovative technology that inspires!

DotScan is a highly robust system for Braille accuracy inspection in your production area. It enables you to compare embossed Braille contents against PDF files or plain text. By the use of a groundbreaking 3D measurement technology not just the presence of dots but also the accuracy of Braille dot heights can be inspected.

Technical Specifications

Measurement area:	150 mm x 75 mm
Inspection time:	< 2 seconds per carton
Camera:	High resolution
Size (W,H,D), Rack Version:	600 x 600 x 800 mm ³
Size (W,H,D), CubeVersion:	550 x 550 x 550 mm ³





What you get with a DotScan system

- ✓ Reading of Braille printing
- ✓ Comparing Braille printing against pdf files or plain text
- ✓ Touchability inspection of Braille dots by use of height information
- ✓ Compliant with European standard DIN EN ISO 17351:2014
- ✓ More than 15 different Braille alphabets implemented and choosable
- ✓ Language and country-specific special characters implemented
- ✓ Possibility to inspect and document results of complete printing sheets
- ✓ Saving and printing of inspection results for QA-purposes
- ✓ Editable printing templates to fulfil customer requirements and wishes
- ✓ Detailed hard- and software documentation
- ✓ in-situ calibration certificate included

Customer benefits

- ✓ Documented quality assurance of Braille printing
- ✓ No confusion for blind patients
- ✓ No expensive product recalls
- ✓ Perfectly adjusted embossing dies
- ✓ Saves time and costs during inspection process

**Inspection time < 2 seconds!
Saves time and costs during
inspection process!**

"...Directive 2001/83/EC as amended by Directive 2004/27/EC, Article 56 a
The name of the medicinal product, as referred to in Article 54 a
must also be expressed in Braille format on the packaging. The
marketing authorization holder shall ensure that the package
information leaflet is made available on request from patients
organisations in formats appropriate for the blind and partially-sighted..."



References

Many customers from both printing and pharmaceutical industries do rely on DotScan:

Kroha
Faller
Copaco
Bayer Bitterfeld
Karl Knauer
Pharmacenter
Goldprint
Packart
...and many more.



Contact

in-situ vision & sensor systems
Mühlweg 2c
82054 Sauerlach

phone: +49 8104 90960-0
fax: +49 8104 90960 29
e-mail: dotscan@dotscan.de
web: www.dotscan.de
www.in-situ.de

in-situ - Your Vision Provider

